

Te Pūtātara a te whānau Te Kura Kaupapa Māori o Wairarapa

Wāhanga Ako 2, Wiki 10 o te 12

16 o Pipiri 2020

Matariki kanohi iti
Matariki ahunga nui

Tēnā tātou e te whānau

Hei a te wiki kei te tū mai nei ka whakanui tātou i a Matariki. Ka whai ake nei he pitopito kōrero me ngā whakaritenga mō te 26 o Pipiri:

- 6am Ka karakia, ka whakanui i a Matariki
Ka whakatō rākau, ka tanumia te pouaka maumahara
- 7.30 Ka kai parakuihi tātou
- 8.30 Ka haere tātou ki Onoke, ā, ka whakaingoatia tō tātou waka ama. Mehemea kei te pai te rangi, tērā pea ka waimārie ētahi o a tātou tamariki, ā, ka whai wā rātou i te eke i te waka, ka hoe ki waho atu o Onoke.

Ka haere tātou mā runga pahi ki Onoke, heoi ruarua noa iho ngā tūru e wātea ana – ki te hiahia koe ki te haere mai tautoko ai tēnā whakamōhio atu ki te Tari i tēnei wiki tonu. Ko ngā manu moata ka kai i ngā noke!

- 10.30 Ka hoki tātou ki te kura
12.30 Ka kai hāngi tātou
1.30 Ka hoki a tātou tamariki ki te kāinga

Arrangements for 26 June and celebration of Matariki:

- 6am Karaka, tree planting and burial of time-capsule
- 7.30 Breakfast
- 8.30 Leave for Onoke and official naming of our waka.

We will be travelling by bus to Onoke and have limited seating, if you are wanting to help on the day please let us know this week – the early bird gets the worm!

- 10.30 Return to kura
12.30 Lunch - hāngi
1.30 Students go home

Nāku iti nei
Whaea Pip

Te Akomanga o Kura Waenga



Matua Te Maehe me ngā ākonga. E whakaatu ana i te mahi kōwhaiwhai ki ngā tamariki.

Ko Ranginui e tū iho nei
Ko Papatūānuku e takoto ake nei.
Nā Tāne a Rangi rāua ko Papa i tokotoko.
Nā Tāne hoki i piki ngā rangi,
ki te tiki i ngā taonga a Rēhua
hei tuku ki te wao.
nā Tāne hoki ka puta mai ko te whai ao, ko te ao mārama! Tihei Mauri ora!
Nā Tāne ka puta mai ko ngā rākau.
Nā Tāne ka puta mai ko ngā manu.
Nā Tāne ka puta mai ko ngā ngārara.
Ā, nā Tāne ka puta mai ko tāua te tangata

Harikoa ana kua mutu te noho mohoa, ā, kua taea te noho tata ki tēnā, ki tēnā. I te hokinga mai o ngā tamariki ki te kura, i tītiro mātou te akomanga ki ngā atua e rua, arā, i a Haumiatiketike rāua ko Rongomātāne.
Ko Haumiatiketike rāua ko Rongomātāne ngā atua o ngā kai i ahu mai i te whenua. He aha ngā āhuatanga o tēnā atua, o tēnā atua? Ko te ngaki māra, ko te whakatō pihi tae atu ki te hauhake i ngā hua.

‘Kainga te tahua o Rongo rāua ko Haumia te whakatauki i akongia e tēnei akomanga’. Ko te tahua nei, he tohu mō te nui o ngā kai, arā, hei rau i ngā kai. Nā, i ngā wā o mua, ki te ū mai he manuhiri tūārangi, ko tōna tikanga ka raungia ngā kai hei whakanui i ngā manuhiri rā, hei tohu rangatira hoki mō te mana o te hau kāinga, inā te kōrero, he tahua roa tēnā. Koia hoki he kōrero pai hei mihi mā ngā manuhiri anō ki te ringawera i te mutunga o te hāka

Tino pai tēnei kaupapa ako ki ngā tamariki.

Whaea Lily

NGĀ KAUPAPA E TŪ MAI NEI

Pipiri

19	Last Kōhanga transition for this term
26	Matariki Celebrations (No kōhanga transition)

Hōngongoi

2	Last Day of Term 2 for tamariki
---	---------------------------------

3 Teachers Only Day

20 Teachers Only Day

21	First day of Term 3 for tamariki; and pōwhiri at 10am for all new tamariki starting in Term 3.
----	--

Hereturikōkā

28	Kaumatua Hui
----	--------------

Te Ataarangi Classes with Nanny Paremo

These classes are held every Wednesday from 10-11am in Kourarau.

Kura Pahi 027 913 4924

Kōhanga Reo Transition

Friday 9am -11am

Tamariki need to be accompanied with an adult.

Last transition for Term 2 will be this Friday 19 June 2020.

Kura Health Clinic Years 1-8

Mondays in sick bay at Kura.

Makoura Health Clinic Years 9-13

Mon - Nurses Clinic 9am-1pm

Weds Doctors Clinic 9am-12.00pm

Te Aho Matua – Te Ira Tangata 2.6

Kia mōhio ngā tamariki ki ngā rohe, ki ngā waka, ki ngā kōrero neherā, ki ngā pūrākau, ki ngā pakiwaitara, ki ngā tikanga, ki ngā waiata, ki ngā āhuetanga katoa o tōna ake iwi. Kia mōhio anō ki ngā āhuetanga katoa e pā ana ki ērā atu o ngā iwi tae noa ki ētahi o ngā iwi o tāwāhi.

Kutu Sprays & Combs

We have kutu spray and combs available at the tari if needed.

Tihae Whutupōro

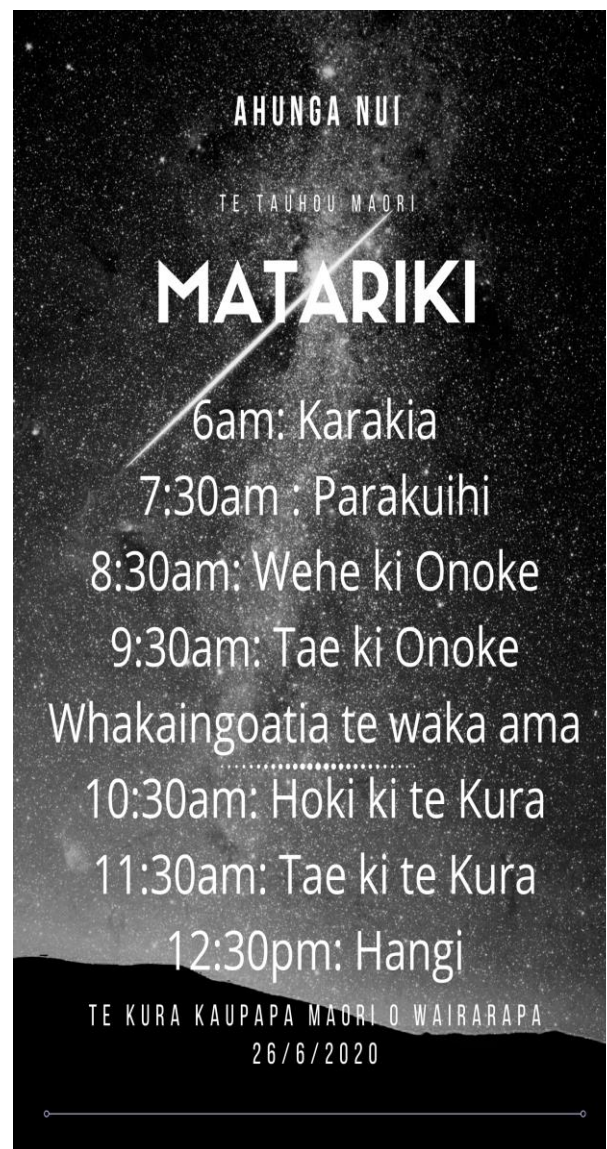
In preparation for an upcoming tournament, Sinead Barrel from Wairarapa Rugby will be coming into Kura to coach and teach Rippa Rugby to our kōtiro. This is open to years 5 - 13 so Kura Waenga upto Wharekura.

What: Rippa Rugby

Where: Kura

When Monday afternoons at 3.30pm

Who: Kōtiro years 5-13



Kia ora e te whānau

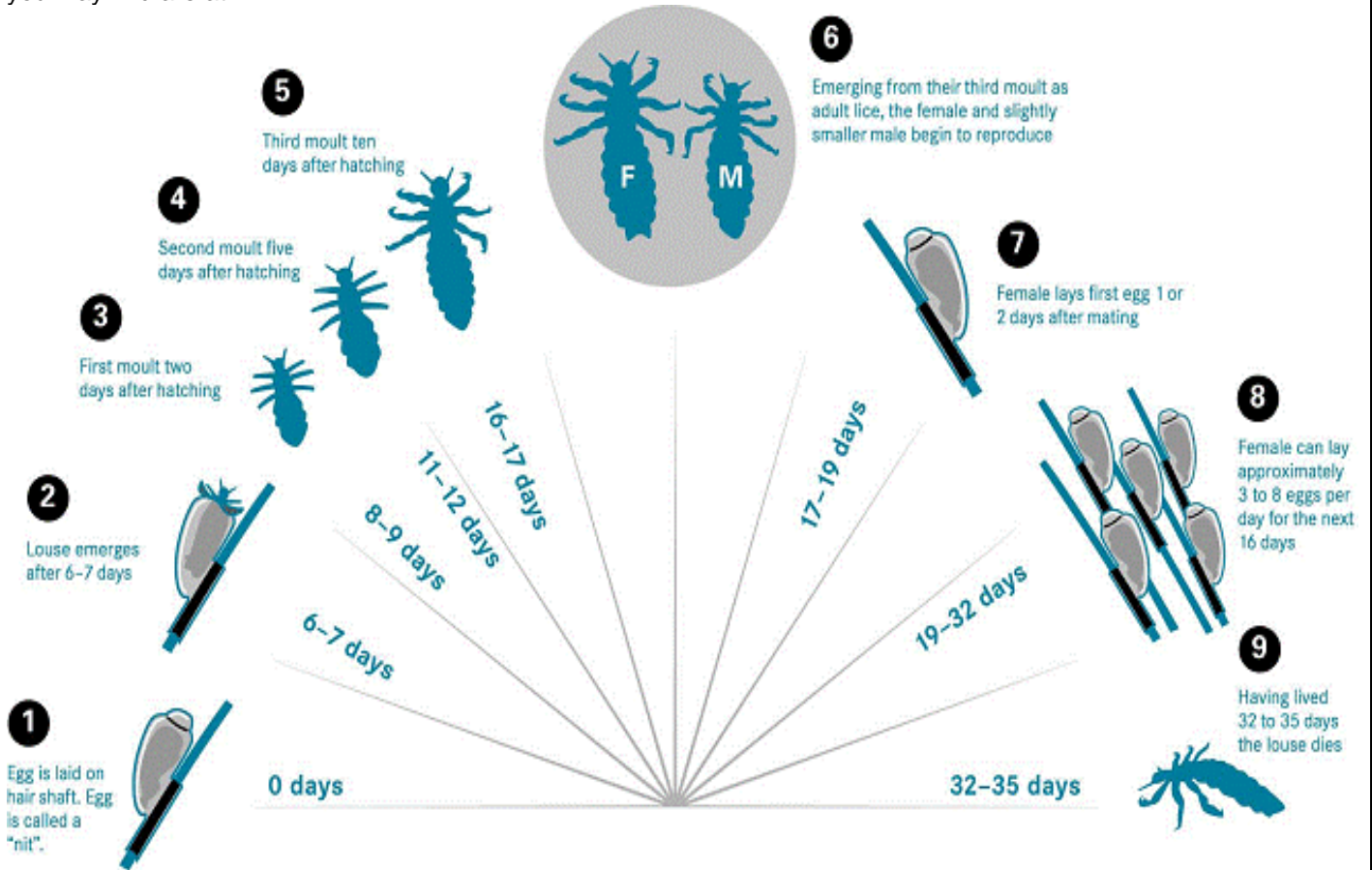
We have been notified of head lice circulating in your child's classroom. Please check the hair of your child(ren) for both live lice and eggs.

HOW ARE HEAD LICE SPREAD?

Head lice are most commonly spread by head to head contact with someone who is infested. They can also spread by objects such as pillows, combs, hats etc., when they have been used immediately after use by an infected person.

WHAT ARE HEAD LICE AND HOW DO THEY LIVE?

Here you will see the growth cycle of the head louse which will help you to establish what stage in the cycle any lice you may find are at.



WHAT TO DO IF NO LIVE LICE AND EGGS ARE FOUND?

- Continue to check the hair of all family members once a week
- If hair is long, we suggest that it is tied back and preferably plaited to avoid head to head contamination.
- Do not share hairbrushes/combs, hats, pillows, bike helmets etc. to avoid re-infestation
- Consider using a natural repellent product that includes tea tree oil or sandalwood as a possible line of defense. These products added to conditioner may also work as a deterrent.
- Clean linen, towels, hats etc. (if used in the last 2 days) in a hot water wash or place these items in plastic bag and put into the freezer for 24-48 hours.
- Ensure hair is brushed well at least twice a day.

