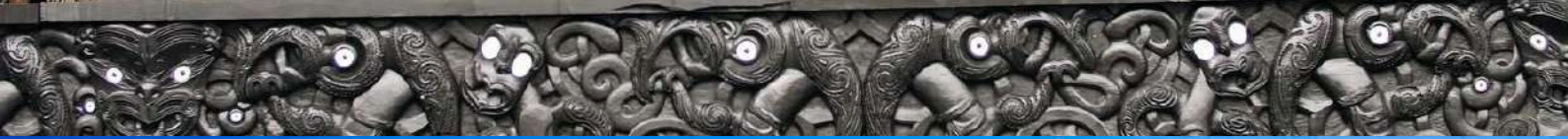


TE PŪTĀTARA



MŌHĒNI WAHANGA 1

WIKI 10 - 2025

TĒNĀ KOUTOU E TE WHĀNAU,

Nau mai ki to tātou mōheni mō te wāhanga tuatahi o te tau 2025! Tiro atu ki tō mātou whārangi pukamata mō ētahi atu pānui.

PG.3

HE PĀNUI

PG.4

He Kōrero nā te Tumuaki

PG.5

Te Aho Matua

PG.6

Ngā Uara

PG.7-14

Kura Pīpī Paopao

Kura nohinohi

Kura teina

Kura waenga

Wharekura

PG.15-16

Hākinakina

PG.17-18

Tūtaki Kaiako/Kaiawhina

HE PĀNUI

If you are not yet connected to
our Facebook page, please
jump on and join up



TE KURA KAUPAPA
MAORI O WAIRARAPA
WHARANGI PUKA MATĀ

Kākahu Hōtoke



**Hui Whakamana
Friday 11 April
2pm
Te Kura
Kauapapa Maori
o Wairarapa**

TE RĀ KAUMATUA

FRIDAY 11 APRIL

10:30AM PŌHIRI

TE KURA KAUPAPA MĀORI O WAIRARAPA

TERM 1

ENDS

11 APRIL

TERM 2

BEGINS

28 APRIL

Rā Kaumātua

WHEN: 11 OF APRIL 2025

WHERE: TE KURA KAUPAPA MĀORI O WAIRARAPA

TIME: 10:30AM

10:30 PŌHIRI

11AM KAPU TĪ / WHAKANGAHAU

11:40AM WHAKAAHUA

12PM HAERE KI NGĀ AKOAMNGA

12:30PM WĀ TĀKARO

1PM KAI TAHI

2PM HUI WHAKAMANA

3PM HOKI KI TE KĀINGA



E rau Rangatira mā, Nau
mai tauti mai
ki tō tātou kura kia
whakanuia ō mokopuna i a
koutou ko tō whānau

WHĀRANGI TUMUAKI

Kei aku kāwai nui, kei aku kāwai roa o tō tātou kura. Nei rā ngā mihi matakui ki a koutou katoa. Ngā mate o te wā, haere rā koutou ki te ara o te tini, o te mano okioki ai e....Hoki mai ki a tātou te hunga ora, kia ora mai anō.

Mārakerake ana te kitea te taukaea o te aroha i waenganui i a tātou katoa i tēnei wāhanga, i roto i ngā mahi katoa o te kura mō a tātou tamariki te take. Kua tata tātou ki te mutunga o tēnei wāhanga ako tuatahi o te tau, ā, he maha tonu ngā kaupapa me tutuki.

Kātahi anō te kura i whakatau i a tātou tamariki i haere ki ngā whakataetae waka ama ā-motu i tū ki Rotorua. Poho kererū katoa te kura i o rātou whakapau kaha ki te hoe me te whakakanohi hoki i tō tātou nei kura.

Hei te 11 o Paengawhāwhā, tū ai tō tātou rā whakanui, whakamiha i o tātou pēperekōu, o tātou kokoro. Kua ngana a tātou tamariki ki te whakarākei akomanga, te hanga kēmu me te whakarite i ētahi mahi mō tēnei rā whakahirahira. Ka mutu ngā mahi whakanui i o tātou kaumātua, ka whakarauika anō tātou ki roto o Kahurangi mō te Hui Whakamana. Nā reira rarau mai rā e te whānau ki te whakamānawa i o tātou kaumātua, tamariki hoki.

TE AHO MATUA

**Ko te Aho Matua te tahūhū o tōku kura, ko
ngā tikanga ngā heke, ko te whānau ngā
poupou.**

Te Tino Uaratanga

6.4 Kia noho ohooho tona auahatanga i roto i
nga mahi waihanga o tona ao.



"Ruia te taitea, Kohia te rangiura"

NGĀ UARA

He aha ēnei mea?

Ānei ētahi whakaaro mai i ngā ākonga...

Rangatiratanga

Kei ia tangata tōna ake rangatiratanga. Ko te āhuatanga o taua rangatiratanga, nāna anō e taea ai te whakatau. Kei roto i tētahi o tō āhua, ko te ngā uara, me ōu ake mana motuhaketanga.

Whanaungatanga

He mahi nui te whanaungatanga ki roto i nga āhuatanga katoa ki te kura hoki ki te kainga, ki te marae. Kua kitea i ēnei wāhanga hoki kua kitea, ā, kua rangona te whanaungatanga ki ngā hākinakina.

Kotahitanga

Ko te tohu o te Kotahitanga ko te mānaaki, ā, ko Tainui me te arikinui e whakatīnana ana ia te wā ka tū he hui nui ki Turangawaewae. Kia kotahi ki te kaupapa. Ko te kaupapa te kotahitanga.

Pono

Ko ngā āhuatanga o te pono, ko te tau, ko te mahi, ko te karakia, ko te manaaki. Ki konei ai ka tika te haere.

TE MATATINI O TE KAHUI MAUNGA



Tākiri mai te ata huakirangi!

Whītiki Te Reo Māori, whītiki Te Aho Matua, whītiki te Wairarapatanga!

Ka pō, ka ao, ka awatea!

Korou noa, korou ora.

Te Kāhui Maunga, Te Kāhui Tipua, Te Kāhui Wairua, e Koro Taranaki e He puāwai ahau nō runga i te tikanga, He rau rengarenga nō roto i te raukura. Ko taku raukura he manawanui ki te ao. Ko taku mana motuhake he raukura ki te ao. Me ko te ahi a Tahurangi, kā tonu mai ana. Me ko koro Taranaki, tū tonu mai ana taku mana Māori motuhake.

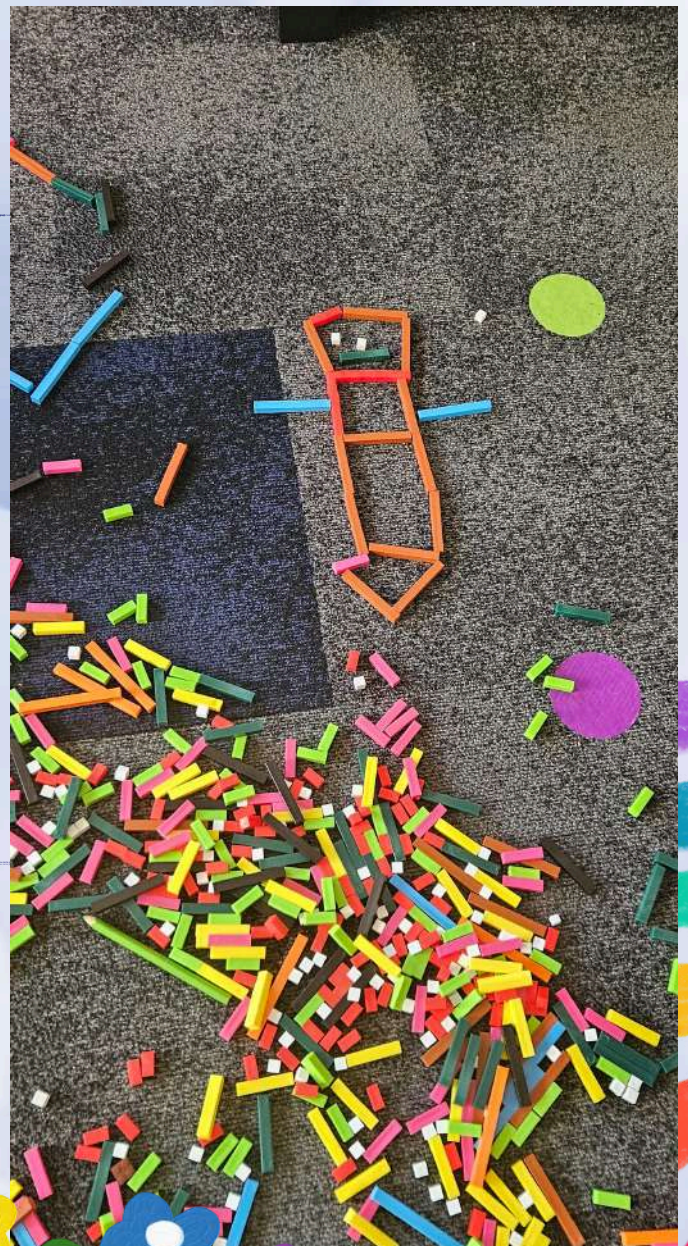
E whakanui ana i wā mātou titi raukura o tō tātou kura i tū ki Te Matatini o te Kāhui maunga. Tēnei te whakamānawa atu nei i tā koutou whakapetongo ngoi, i tā koutou tū māia ki te whatārangi.



PIPI PAOPAO




I ia miniti, i ia miniti o te rā o ia
rā, ahakoa tamaiti, ahakoa
pakeke, e whakapau kaha ana
ia ki te whakatutuki i ōna
oranga.

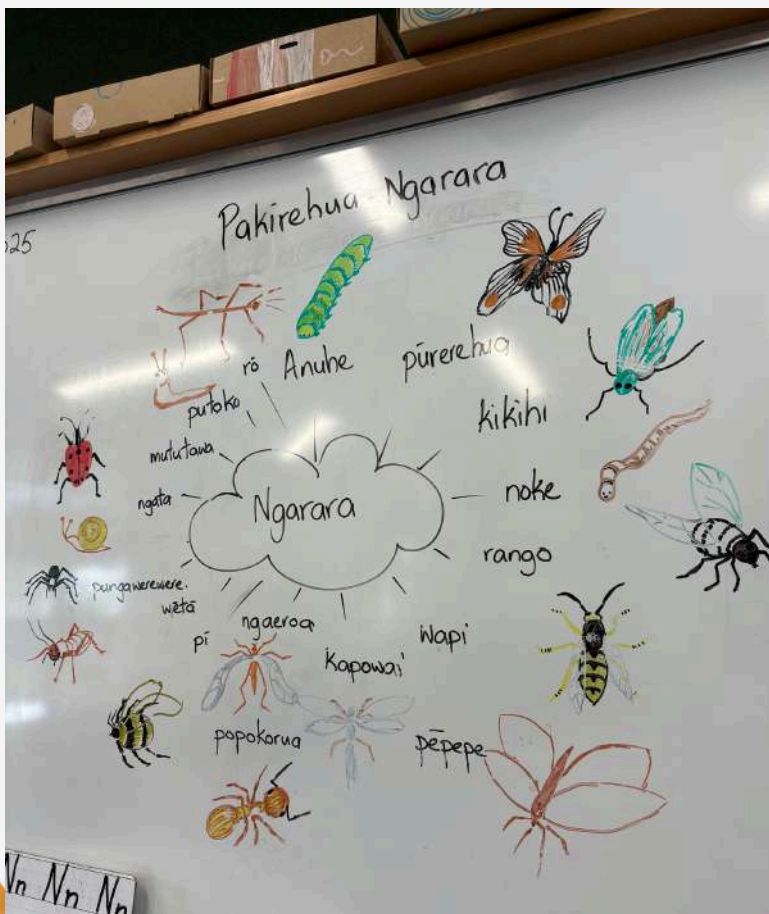


KURA *Mohimohi*

'KO TE KAI A TE RANGATIRA'

I tēnei wahanga, e ako ana ngā tamariki ki te tautohu i ngā ngārara o Te Waonui a Tāne. Ingoa mai, āhua mai, he aha tā rātou nei mahi anō hoki.

Aue! Te weriweri hēoi kua tūwhera te ngākau māhaki ki ēnei o ngā hua o te taiao. 



Kei whea mai te pai!

Kura Teina

A

A

Tēna tātou e te whānau

I ēnei wiki tata nei kei te whakarite ngā
akomanga mō te rā kaumātua.

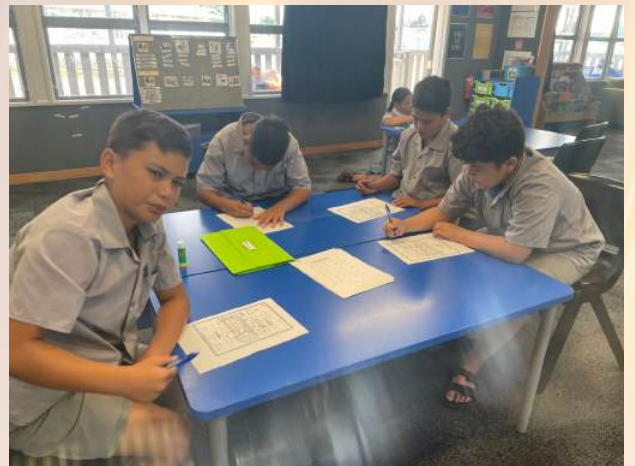
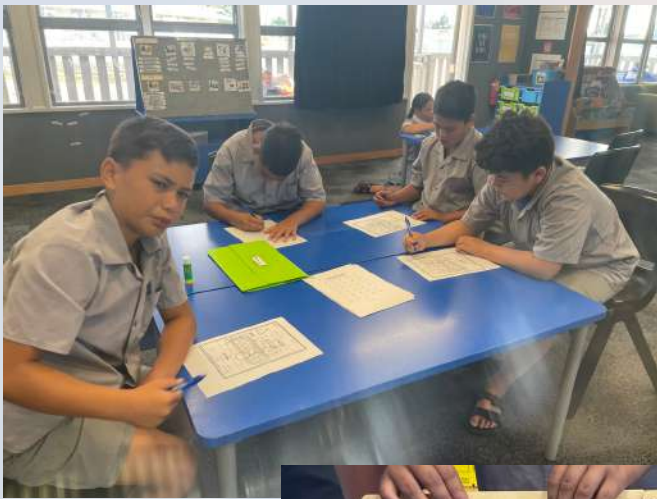
I hauhake ngā tamariki i ngā tōmato mai i te
māra kai o te kura, kia tunu he kīnaki tōmato.

I haere ki te hauhake harakeke hoki kia
hanga putiputi. Puku mahi ana ēnei tauira.
Nou te rourou, nāku te rourou, ka ora ai te
iwi e.



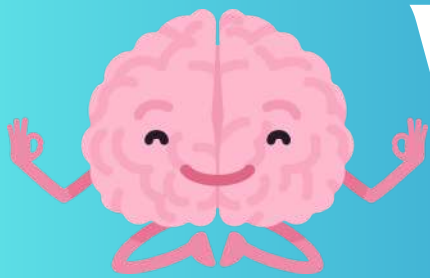
Kura Waenga

Ko te aroha te pou, pou poua kia mau
Ko te aroha te pou tiritiria kia u
kia mau, kia u, te pou o te aroha
ki roto i tēnei whānau, te pou!



Hui tahi ai tātou i raro i te aroha
I runga i te kaupapa o te mātauranga
Karapinepine ngā iwi o te ao
ki te māra whakatipu ai tamariki

**Me huri te kai whakawā hei whai rautaki hei hāpai i te tamaiti ki
runga**



WHAREKURA

Hā ki roto. hā ki waho

I a ata, ka timata te rā ki te whakangā, ki te “meditation”. He mahi tēnei ki te whakatika i te hinengaro, whakapai i te tinana me te whakatau i te wairua. Ki ētahi, taumaha hārukiruki te noho tau, te hā me te kore kōrero. Heoi ki ētahi atu, he tino pai rawa.



He hoia toku tūpuna

Tirohia ki te pepa o te Wairarapa Times Age i te wiki o ANZAC. Tērā pea ka tāngia ngā mahi o ngā tamariki ki roto. Koirā te mahi i rangahautia mo tō rātou kauhau Manu Kōrero, he mea whakanui i tētahi tūpuna i haere ki tētahi pakanga. Wheo kē!!



NGĀ MANU KŌRERO

WAIRARAPA KI TE AWAKAIRANGI
WHAKATAETAE Ā-ROHE 2025



3 PIPIRI 2025

SACRED HEART COLLEGE
KI TE AWAKAIRANGI



WAIKATO
WAIKATO
WAIKATO

HĀKINAKINA - KURA TUATAHI

Ki o Rahi / Tapu Ae



HĀKINAKINA – WHAREKURA

Tihei Kahungunu



Hononga



Reo hāpai

Whanaungatanga



Kori Tinana



Tuakana teina



Tūtaki

KAIĀWHINA

Pou Tommy

Ngā mihi o te wahanga tuatahi ki a
koutou te whānau.

Ko Tommy ahau, he raukura nō tēnei
kura kaupapa kua hoki mai hei hapai i
ngā kaupapa o tō mātou wharekura.

He kaiako tauwiwi, pangarau anō hoki ki
te taha o
ngā tau 9 ki te 10, kei te tautoko hoki
au i ngā kaupapa o te hākina.

Ko tōku whaingā mō tēnei tau hei
whakarite pai i ngā tauira mō ā rātou
mahi NCEA hei te tau e heke mai nei.

Kia paku noa tāku mihi kia whai wā
koutou hei pānui i te pakiwaitara o
Raukura Mereana ktk



Tūtaki

Raukura Mereana

KAIĀWHINA

Nei rā ngā mihi manahau ki a koutou e te whānau, he uri tēnei nō Ngai Tūhoe, Ngāti Kahungunu ki te Wairoa, ā Rangitane anō hoki! He pia nō te Aho Matua, he Raukura kua tipu ake i te ao Māori, he pī karere nō te kohanga reo o Ngati Hamua, he raukura no te kura kaupapa maori o Wairarapa, kei kiia ko “Logie” ki ōku kaiako tawhito, hēoi ki ngā tauira/mokopuna ko “Raukura Mereana” He kaiawhina au ki ta Whaea Hubba taha.



“kua kapa haka au mai i te kōpū”

i a au e tipu ana kua tino ngakau nui au ki te Kapa haka, i te tau 2009 i tū ki te Waifest ki toku kohanga taha haere ake nei ngā tau i te tau 2015 i hoki mai au kia tū ki ōku whanaunga taha ki ngā Ā rohe o Wairarapa, i te tau 2021 i tū au hei kaitātaki mō te kapa o Te Aho o Whātonga, inaeanei kei te Kapa o Rangiuira ahau, kei kiā “He Hikoī Te haere!”



Nō ōku kuia i whāngaia te reo ki ahau, nā rāua tonu toku reo i ora ai! i te tau 2014 i rere atu tōku kuia a Marcia Tangiwaka ki ōna matua tipuna, i ēnei wiki tata nei kua rere atu toku kuia a Mihi Keita ki ōna matua tipuna, hāere tū atu kei ōku kuini! , ahakoa kāore rāua i konei e ora tonu ana rāua i o rāua tamariki/mokopuna, ā ko au tētahi o ēna mokopuna !

